



ASX ANNOUNCEMENT  
ASX Code: **BDR**

24 April 2012

## **TROPICANA EAST - HERCULES DRILL RESULTS**

- **3 m @ 10.8 g/t gold**  
**including 1 m @ 23.9 g/t gold**
- **2 m @ 4.1 g/t gold**
- **7 m @ 5.5 g/t gold**

Beadell Resources Limited (**Beadell**) is pleased to announce further RC drill results from the Hercules Prospect including **3 m @ 10.8 g/t gold** in NLC112, **2 m @ 4.1 g/t gold** in NLC114 and **7 m @ 5.5 g/t gold** in NLC155 (Figure 1, 2 & 3, Table 1). The results confirm a high grade core of northeast striking, steeply southeast dipping gold mineralisation over at least a 200 m strike length.

The Hercules and Atlantis prospects are located along a 15 km long anomalous corridor termed the Hercules Shear Zone (HSZ) which is located 60 km northeast and along strike of the 6.4 Moz Tropicana Gold development project.

A total of 5,800 m of RC drilling has recently been completed at the Hercules and Atlantis prospects with results from approximately 20 % of the program yet to be received.

### **Hercules Prospect – RC drilling intersects 7 m @ 5.5 g/t gold and 3 m @ 10.8 g/t gold**

The **Hercules prospect** is located along the northern part of the 15 km long Hercules Shear Zone (Figure 3). New results from the Hercules prospect include **7 m @ 5.5 g/t gold** from 128 m in NLC155 (Figure 1 & 2). An RC hole NLC154 drilled 50 m up dip from this result intersected **1 m @ 3.5 g/t gold** from 64 m, **2 m @ 2.2 g/t gold** from 78 m and a composite result of **5 m @ 0.6 g/t gold from 105 m to bottom of hole**.

A further 120 m along strike to the southwest a result of **3 m @ 10.8 g/t gold** from 49 m including **1 m @ 23.9 g/t gold** from 51 m was recorded in NLC112 (Figure 2). An additional RC hole drilled directly beneath this hole intersected **2 m @ 4.1 g/t gold** from 81 m in NLC114 confirming a steep southeast dipping lode.

High grade gold mineralisation at Hercules has now been intersected over a strike length in excess of 200 m. The mineralisation remains open down dip and along strike, particularly to the southwest where further RC drill results are awaited and numerous wide spaced aircore anomalies exist.

The wider Hercules Shear Zone represents a highly prospective corridor of anomalous gold results along strike of the world class Tropicana gold deposit.

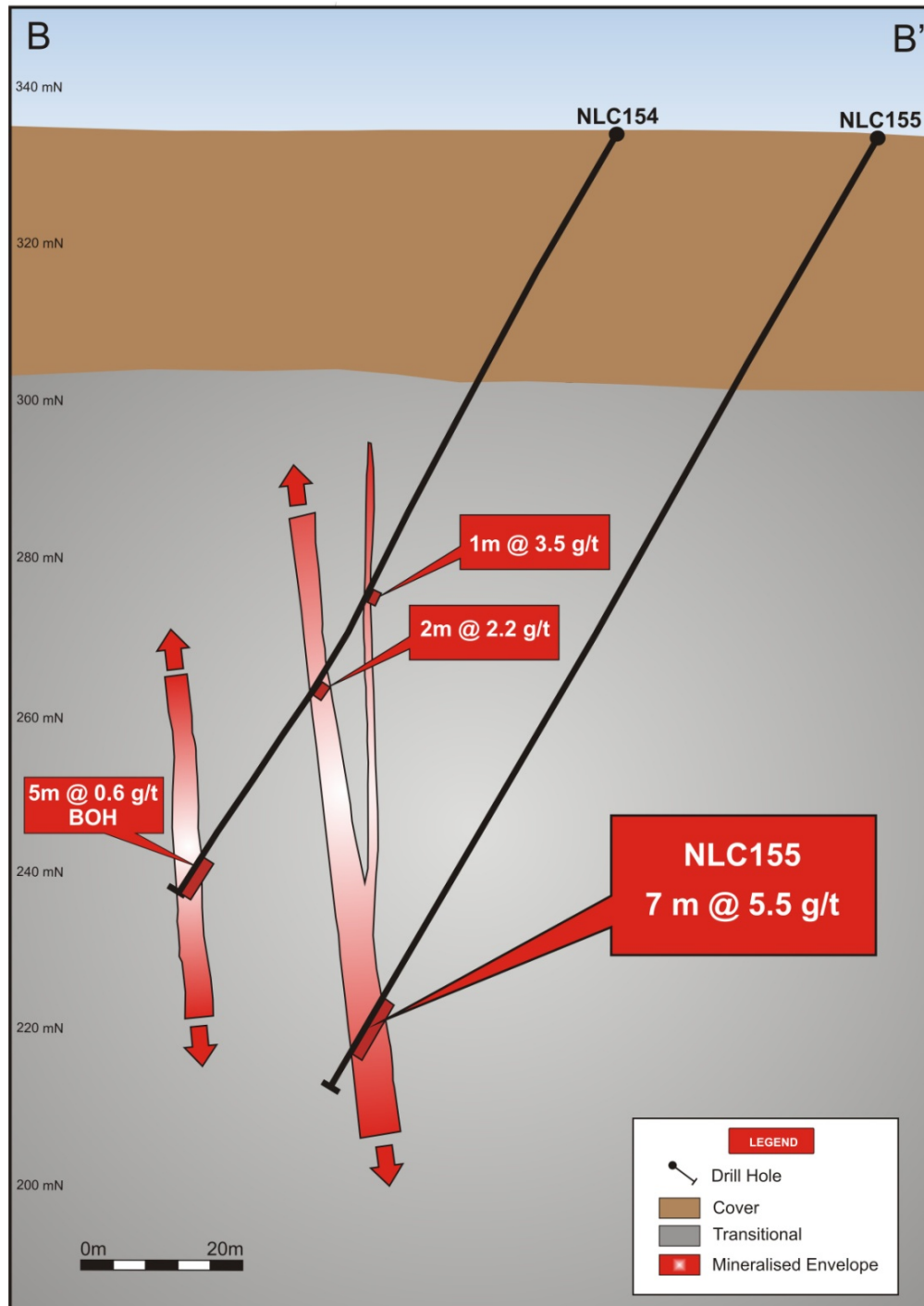


Figure 1. Hercules Drill Section looking northeast.

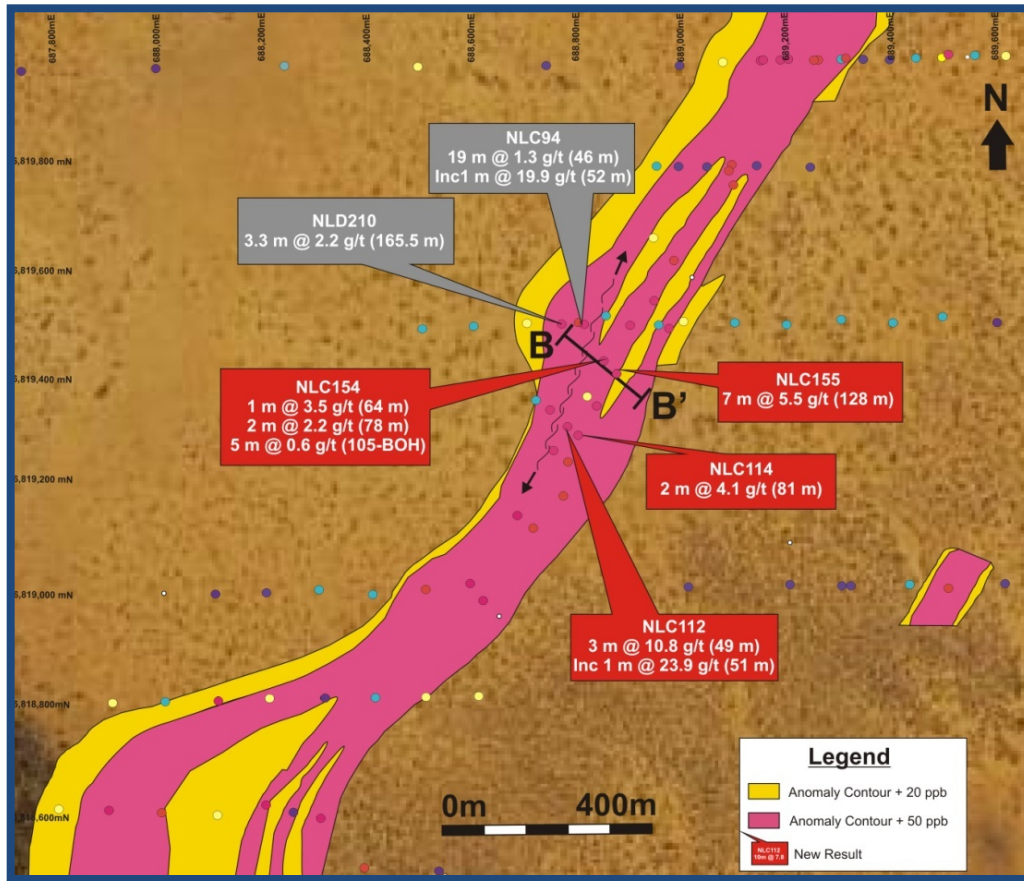
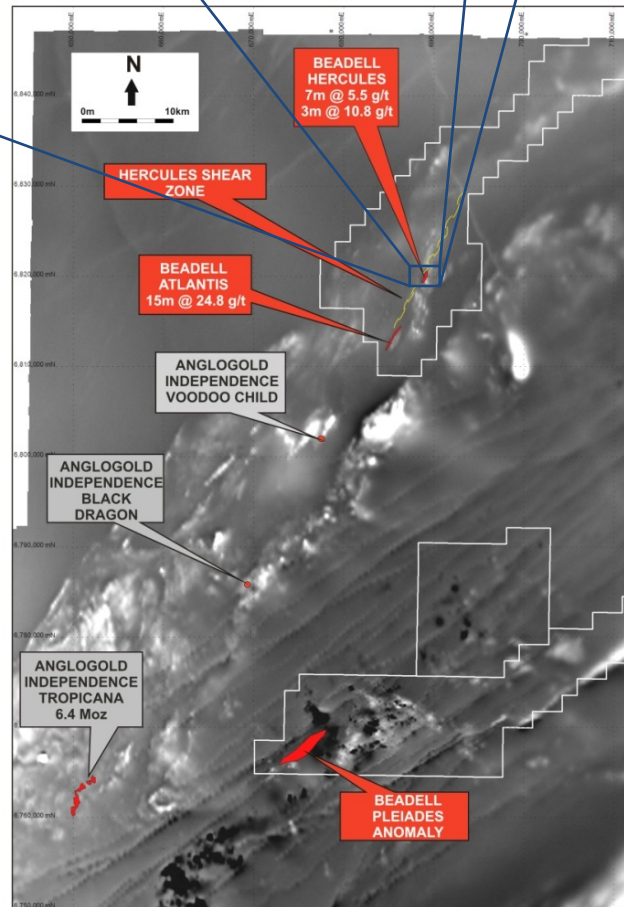


Figure 2. Hercules Drill Plan showing location of new drill results

Figure 3. Tropicana East Location Plan on Aeromagnetics



### Atlantis Prospect – Large gold anomaly defined in excess of 3 km long

The **Atlantis prospect** is located 5 km along strike to the southwest of Hercules, on the Hercules Shear Zone (HSZ). New RC results have been received from drilling done to target the southwest extension of the gold mineralisation.

The RC results confirm the presence of a very large gold anomaly, well in excess of 3 km long hosted in a moderately northwest dipping shear zone. New composite results include 10 m @ 0.6 g/t gold from 70 m in NLC 135 and 5 m @ 0.6 g/t gold from 75 m in NLC137.

The recent RC drilling on the southern half of the Atlantis prospect is based on approximately 200 m spaced sections. Several results are pending from this area, however future work will aim to vector towards a potentially higher grade core or source region of the anomalous gold intersected to date.

Prospect	Hole	North	East	Azi	Dip	From (m)	To (m)	Width (m)	Gold (g/t)
Hercules	NLC112	6819313	688771	315	-60	49 51	52 52	3 1	10.8 23.9
Hercules	NLC114	6819300	688784	315	-60	81	83	2	4.1
Hercules	NLC154	6819425	688833	315	-60	64 78 105	65 80 110	1 2 5	3.5 2.2 0.6*
Hercules	NLC155	6819401	688856	315	-60	128	135	7	5.5
Atlantis	NLC135	6812607	685123	090	-60	70	80	10	0.6*
Atlantis	NLC137	6812549	684954	090	-60	75	80	5	0.6*

\* 5 m composite result. All other results are reported as >0.5g/t with no greater than 2 m internal dilution.  
BOH (Bottom of hole result)

Table 1. Hercules and Atlantis significant new RC drill results.

### For further information please contact:

Peter Bowler | **Managing Director**  
T: +61 8 9429 0801  
[peter.bowler@beadellresources.com.au](mailto:peter.bowler@beadellresources.com.au)

Rob Watkins | **Executive Director Geology**  
T: +61 8 9429 0802  
[rob.watkins@beadellresources.com.au](mailto:rob.watkins@beadellresources.com.au)

### Competency Statement

The information in this report relating to Exploration Results and Mineral Resources is based on information compiled by Mr Robert Watkins who is a member of the Australasian Institute of Mining and Metallurgy and has sufficient exploration experience which is relevant to the various styles of mineralisation under consideration to qualify as a Competent Person as defined in the 2004 Edition of the 'Australasian Code for Reporting of Exploration Results, Mineral Resources and Ore Reserves'. Mr Watkins is a full time employee of Beadell Resources Ltd. Mr Watkins consents to the inclusion in the report of the matters based on his information in the form and context in which it appears.