



Annual General Meeting

25 November 2009





BEADELL RESOURCES LIMITED



Board of Directors / Senior Executives

- **Dr Mike Donaldson** – Non-executive Chairman, BA (Hons), PhD, MAIG – Mike's industry experience includes 15 years with Western Mining Corporation, Exploration Manager for Coolgardie Gold NL, General Manager Exploration for Sons of Gwalia and Ashton Mining, Chief Geologist for Lithic Metals and Energy 2007-09. Non-executive Director for Territory Resources since August 2008. From 2001-07 he was Assistant Director of the Geological Survey of Western Australia.
- **Peter Bowler** – Managing Director – Over a three year period Peter oversaw the rapid growth of Agincourt Resources. Initially he was Resident Manager / Director of Operations and was subsequently appointed as Managing Director. As Managing Director of Agincourt, he facilitated the A\$150 million purchase of the Martabe Project from Newmont in 2006 and the A\$415 million takeover by Oxiana in April 2007.
- **Rob Watkins** – Executive Director Exploration, BSc (Hons) MAusIMM – Rob was the Exploration Manager for Agincourt Resources and has 14 years exploration experience in Australia and Africa with Placer Dome and Delta Gold. He has a recent track record of exploration success in Indonesia and Brazil including the acquisition of the Andorinhas project, which was then sold after a rapid expansion of resources (83%) within a 12 month period.
- **Greg Barrett** – Company Secretary / CFO, CA, FFin, B.Comm – Greg was the finance executive and Company Secretary for Agincourt Resources and was involved in taking the company from a market capitalisation of A\$4 million to A\$415 million. He previously worked for KPMG before specialising in the mining industry. Greg has 15 years management, corporate advisory, finance and accounting experience while working for several listed and unlisted public companies for which he has held the role of Company Secretary for over ten years.

Ownership Data (as at 30 September 2009)

Shareholder	Shares (m)	% of Total
OZ Minerals Ltd	12.8	13.7
Management	22.9	24.5

Website

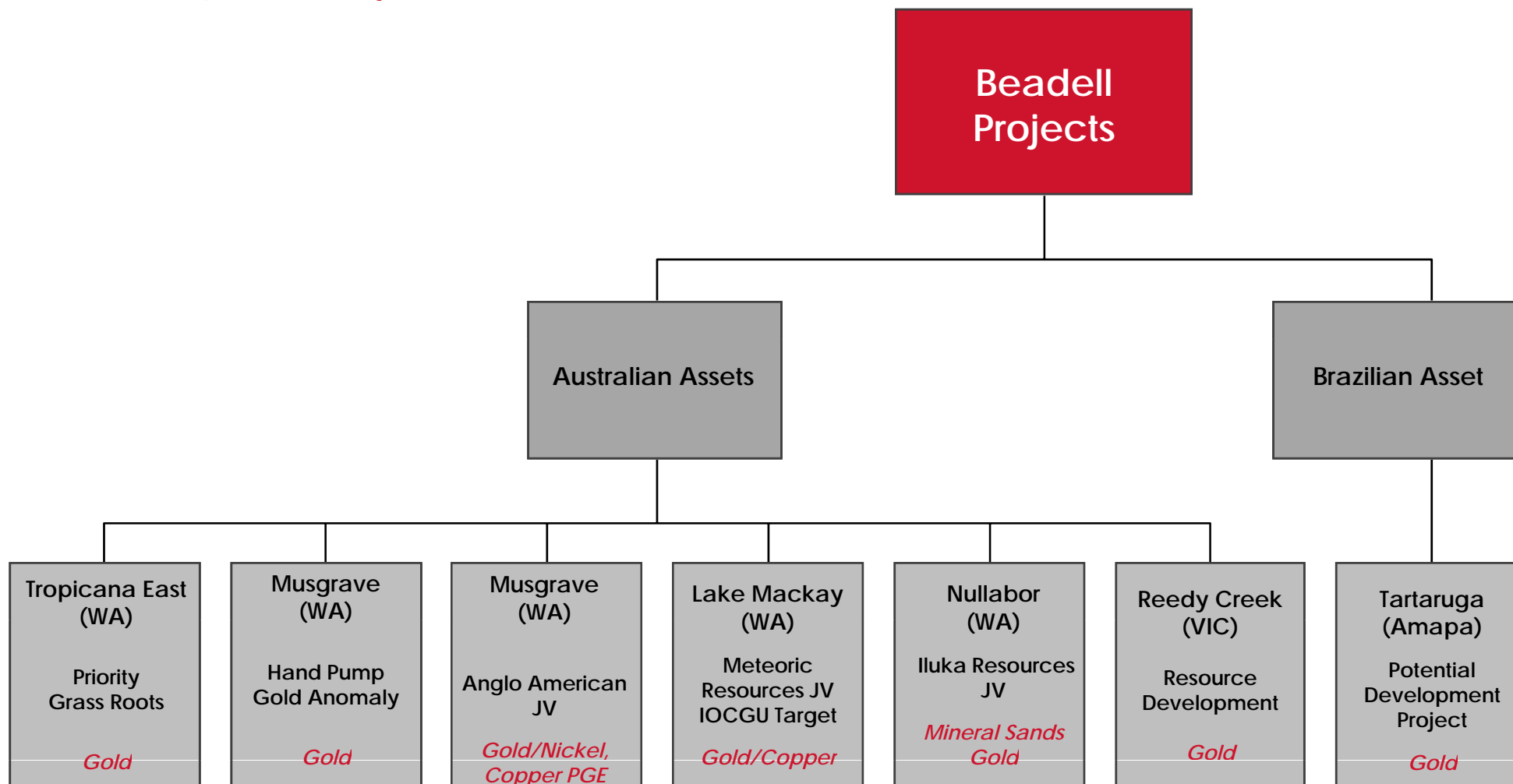
www.beadellresources.com.au

Shares Outstanding (m)

Total Shares Outstanding	93.6
--------------------------	------



Summary of Projects

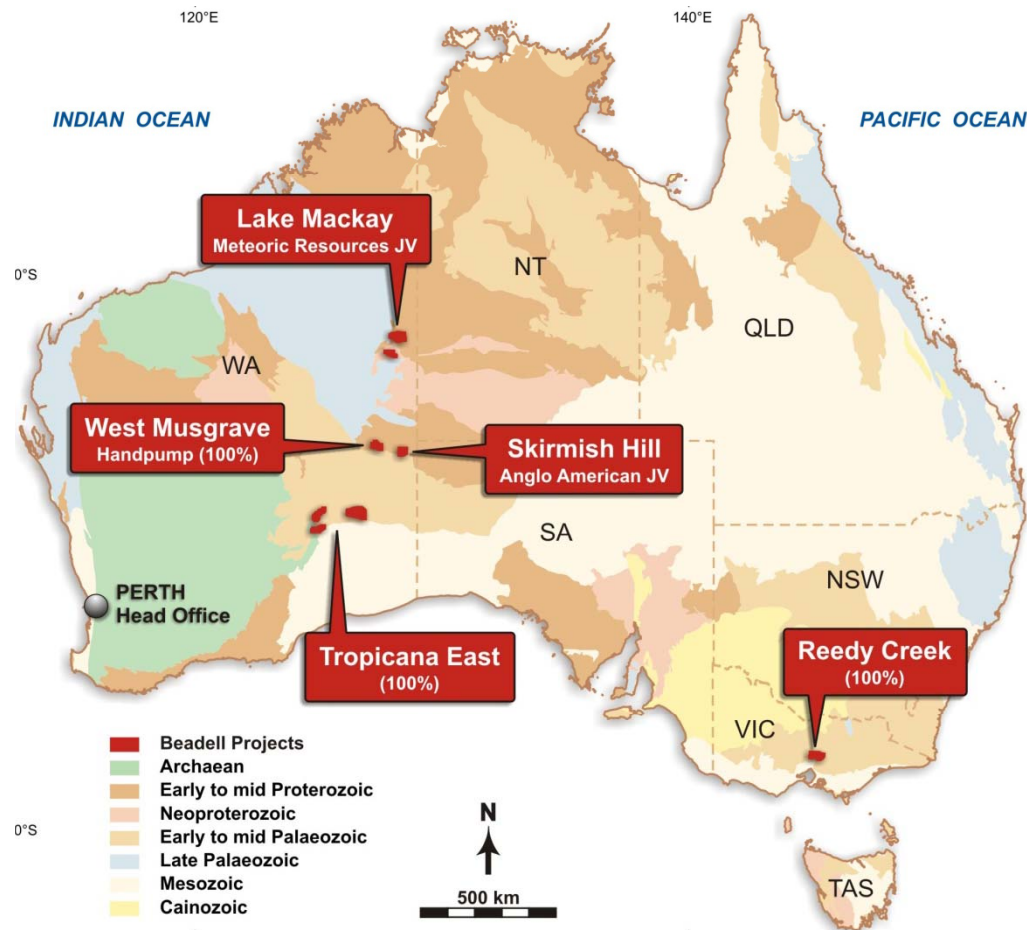




BEADELL RESOURCES LIMITED



Location of Existing Beadell Projects in Australia and Brazil





BEADELL RESOURCES LIMITED



Brazil



Tartaruga Project

Excellent Access & Infrastructure



- 160km north of Macapa, capital of Amapa State
- Other Regional gold mines (New Gold)
- Amapa Government supportive





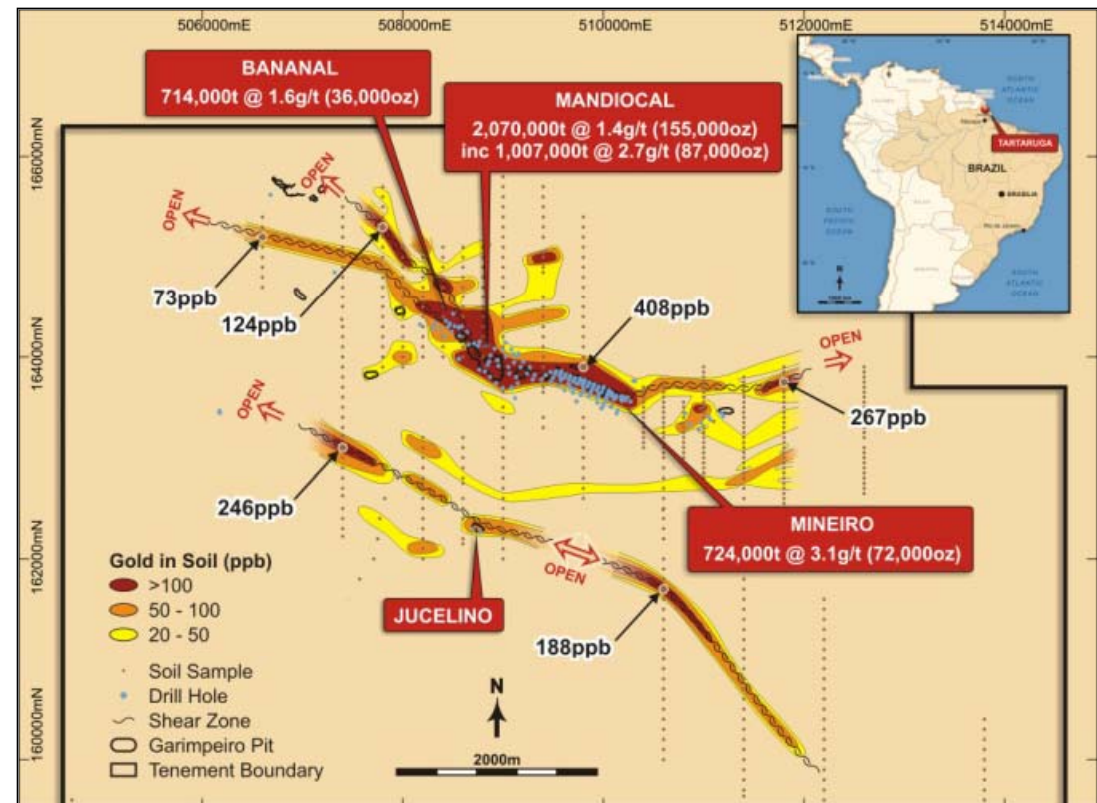
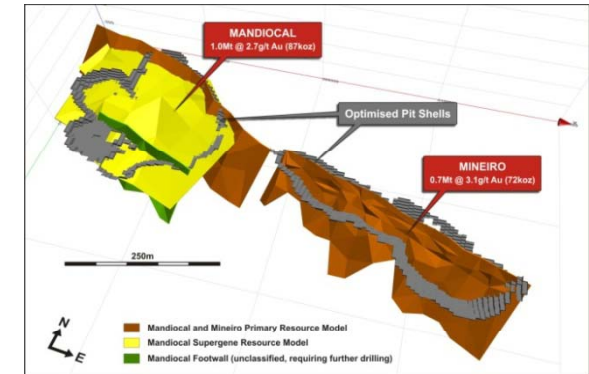
BEADELL RESOURCES LIMITED



Tartaruga Project

Near-term development potential

- Maiden JORC Inferred Resource of 5.5 Mt @ 1.6 g/t gold for 279,000 oz
- Scoping level pit optimisations indicate excellent development potential
- World class geological setting in Palaeoproterozoic greenstone gold. Rio Tinto claw back rights if more than 7 M oz of gold discovered
- Mineralisation hosted in tabular quartz stringer veining from 1.4m-13m wide hosted in sericite altered quartzite in excess of 1,500m strike
- Excellent exploration upside with an undrilled new discovery "Rio de Ouro" and only half of the 6 km long Mineiro trend drilled and a new 6 km long soil anomaly discovered to the south known as "Jucelino"



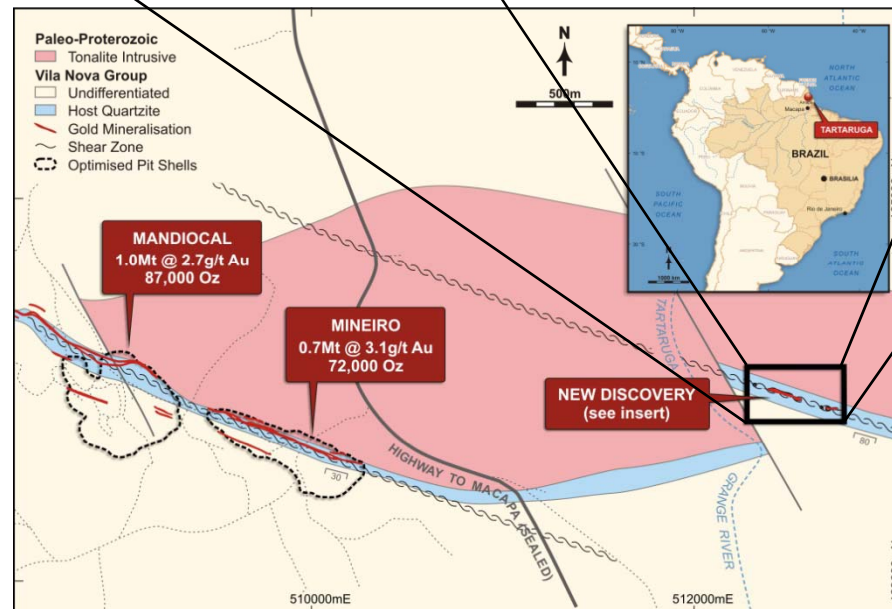
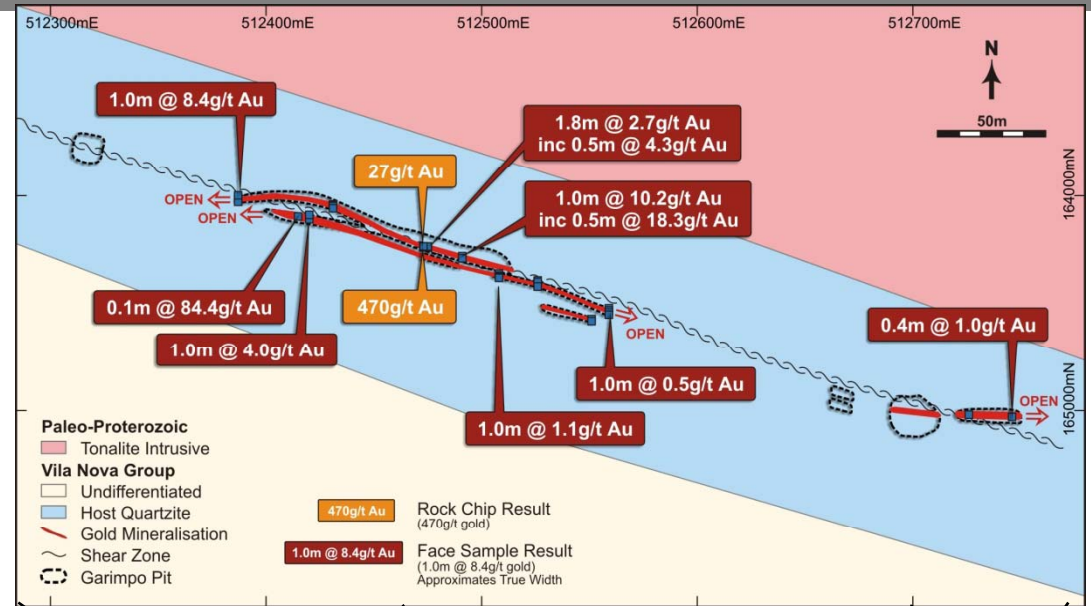


BEADELL RESOURCES LIMITED



“Rio de Ouro” Discovery *Significant Exploration Upside*

- New, completely undrilled gold discovery only 2 km east of main Mineiro / Mandiocal resource area.
- Face sampling of outcropping mineralisation in shallow artisanal pits include approximate true width results of **1.0m @ 10.2 g/t**, **0.1m @ 84.4 g/t**, **1.0m @ 8.4 g/t**
- Two point sample rock chips taken from main pit assayed at **470 g/t** and **27 g/t**
- Mineralisation hosted by two sub-parallel tabular shear zones in quartzite over 400m in strike and open in all directions.
- Excellent potential to define a significant resource in the area of artisanal mining and to explore for extensions and repetitions of the mineralisation along strike.





BEADELL RESOURCES LIMITED



Western Australia

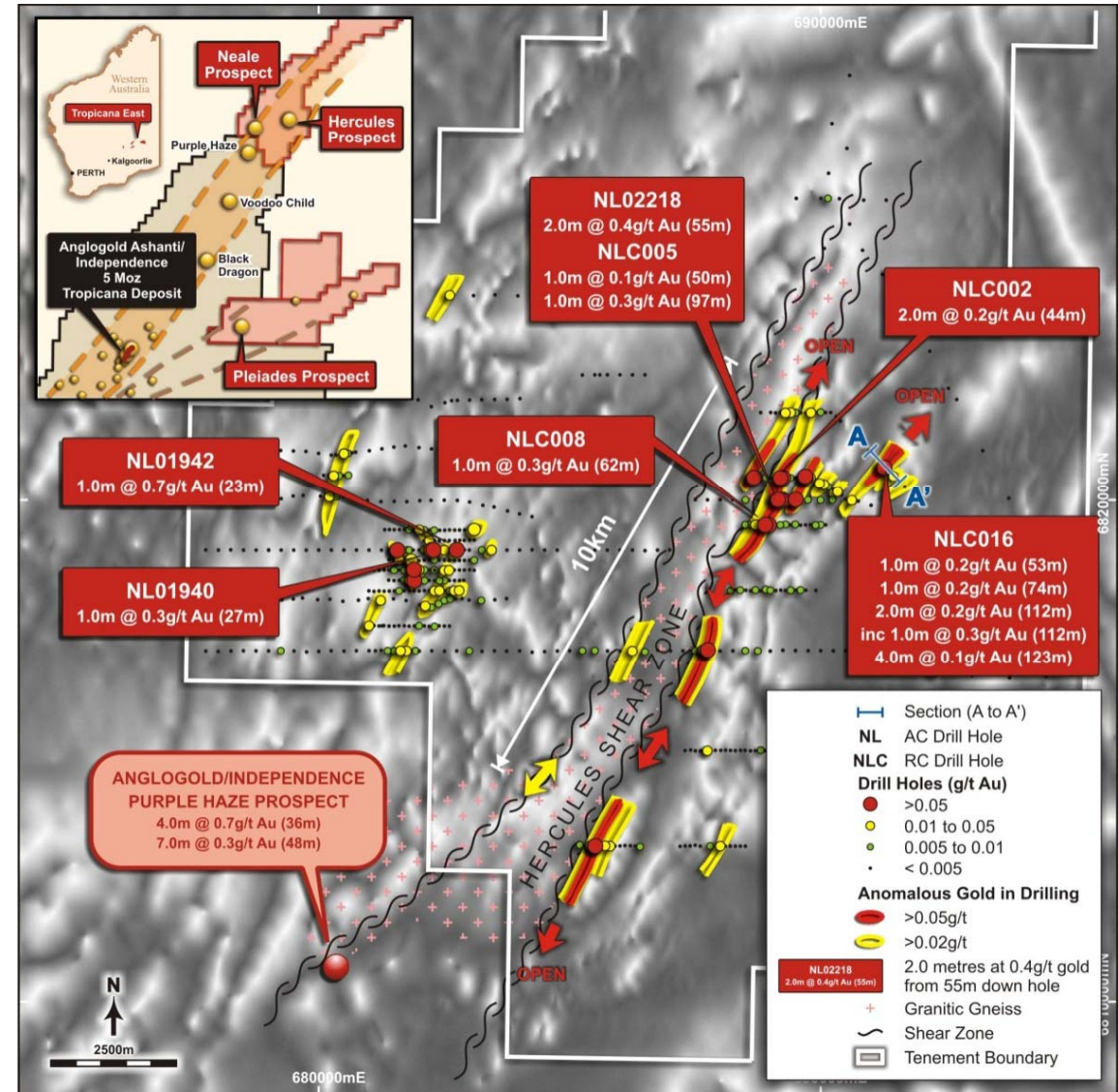


BEADELL RESOURCES LIMITED



Tropicana East Project *Hercules Gold Anomaly*

- 1,395 km² of previously unexplored tenure NE Albany Fraser Province adjacent to new 5 Moz Tropicana gold discovery by AngloGold / Independence
- Hercules anomaly – Broad regolith gold anomaly defined over a 10 km strike by wide spaced aircore drilling with results up to 0.7 g/t gold. Aircore drilling currently in progress.
- Hercules anomaly – First pass RC testing of basement intersected broad gold anomalism up to 0.3 g/t associated with sericite – pyrite altered felsic unit



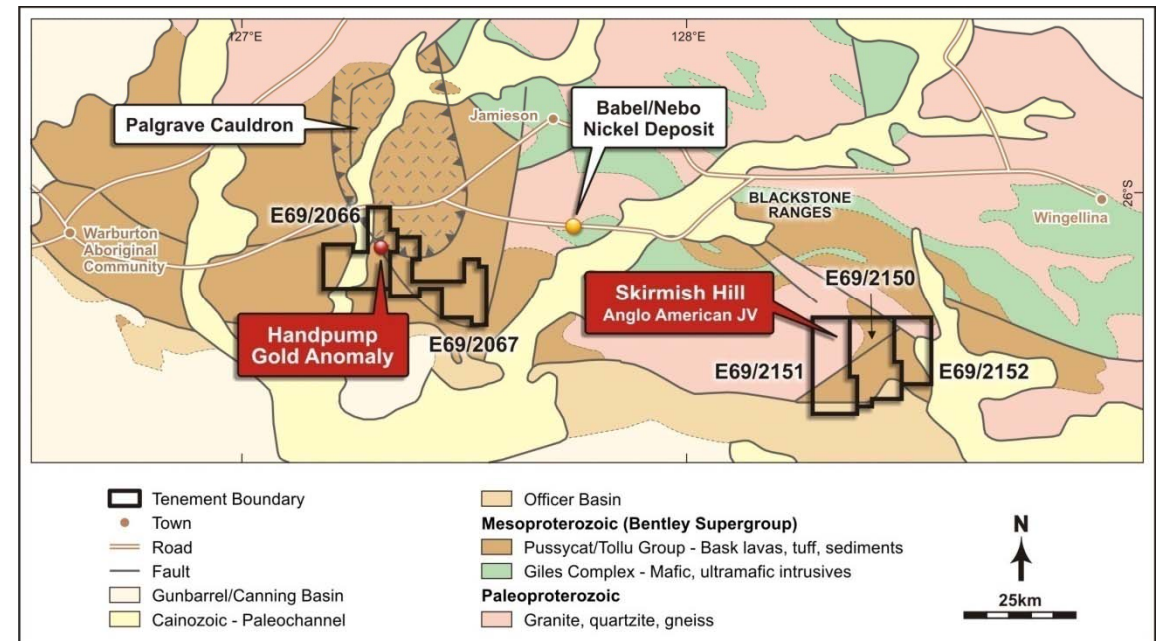
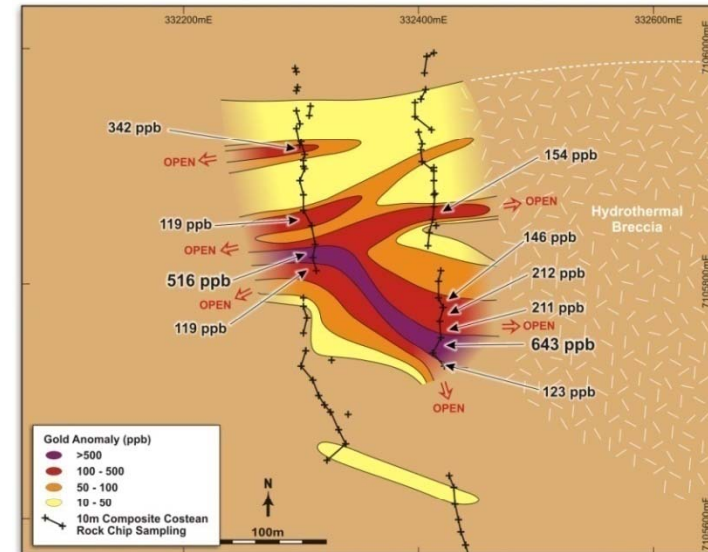


BEADELL RESOURCES LIMITED



West Musgrave Project *Handpump Gold Anomaly*

- Handpump Project - 300m wide magmatic hydrothermal breccia with results from costean rock chip sampling up to 13m @ 0.63g/t gold open in all directions.
- First pass RC drilling of the Handpump and Primer anomalies is currently in progress.
- Skirmish Hill JV with Anglo American. Anglo can earn 75% with expenditure of \$3M over a 7 year period. Currently flying large Spectrem EM survey predominantly in search for nickel sulphide mineralisation



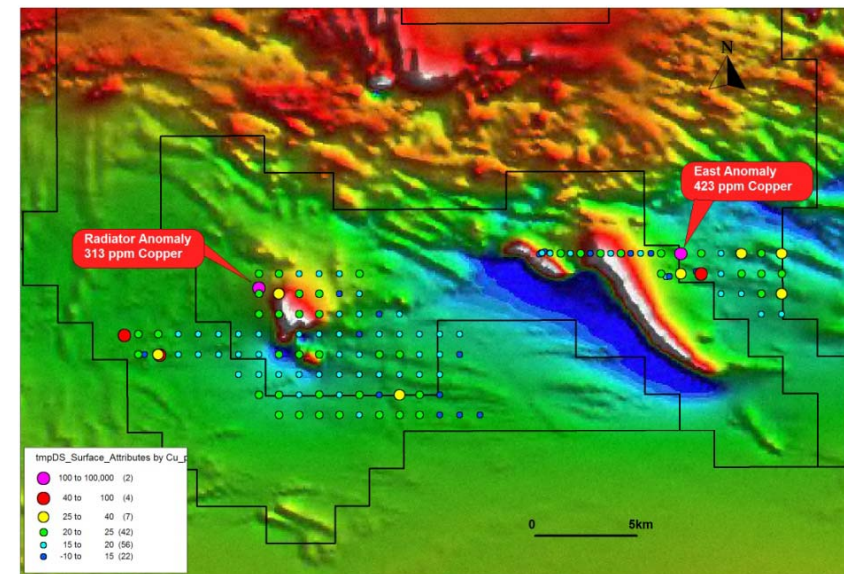
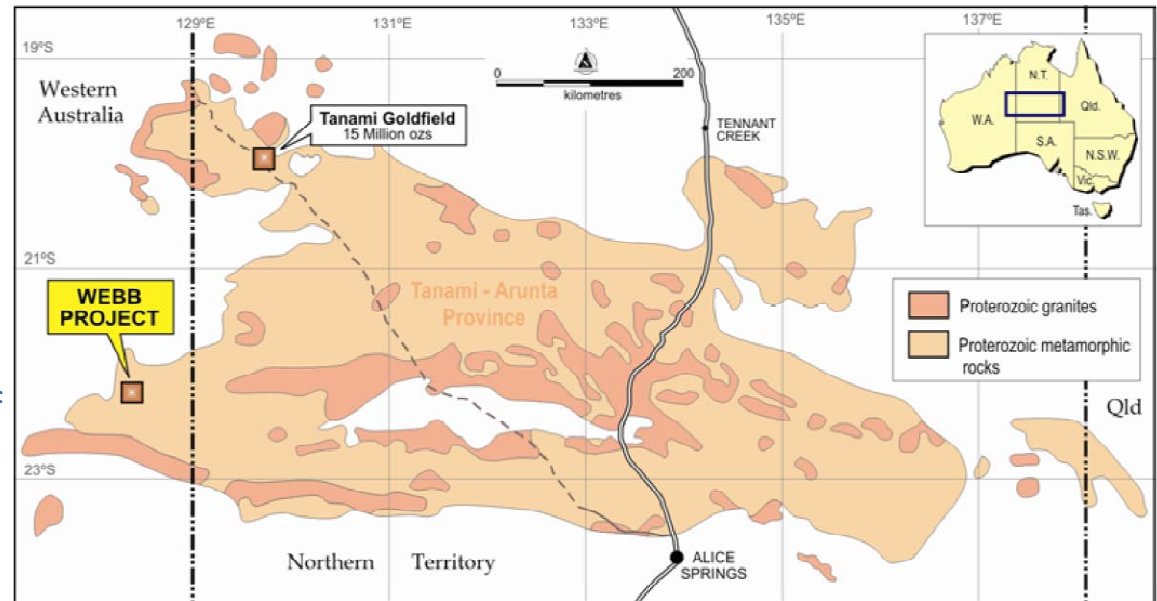


BEADELL RESOURCES LIMITED



Lake MacKay Project

- Joint Venture with Meteoric Resources Ltd (MEI) signed in August 2009
- MEI can earn 70% with expenditure of \$800,000 over a 5 year period and must complete 7,000m of aircore drilling in the first 12 months.
- Coincident gravity and magnetic Iron Oxide Copper Gold geophysical targets have been identified.
- First pass geochemical survey identified several coincident copper gold anomalies





Summary

- Tartaruga Development Project - Brazil
 - Major New High Grade Gold Discovery “Rio de Ouro”.
 - Engineering Scoping studies on existing resources alone indicates robust open pit project.
 - Other identified potential ore sources and excellent exploration upside.
 - Excellent potential to develop an open pit operation and conventional CIL processing plant
- Grass Roots exploration in new and emerging terrains.
 - Tropicana East, 10 km long regolith gold anomaly up to 0.7 g/t gold in wide spaced drilling 60 km along strike from the 5Moz Tropicana gold deposit
 - Hand Pump Gold anomaly in West Musgrave. Current first pass RC drill testing of hydrothermal magmatic breccia.
- JV of Non Core projects.
 - Skirmish Hill JV with Anglo American
 - Nullabour project JV with Iluka Resources Ltd
 - Lake Mackay JV with Meteoric Resources Ltd
- Gold Development Acquisitions
 - Currently reviewing acquisition opportunities focusing on operating or near construction gold mines